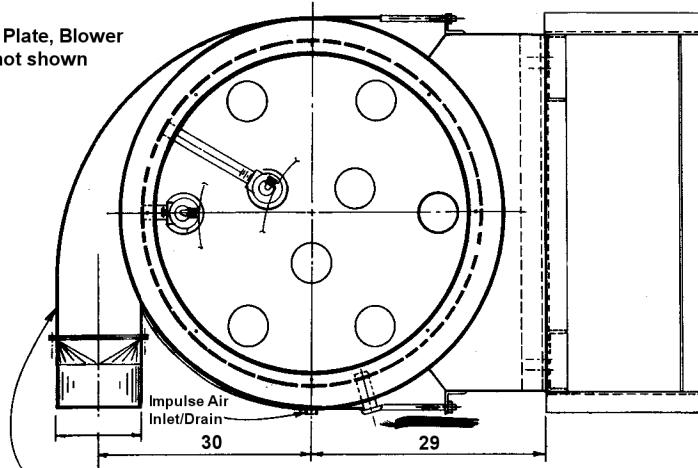
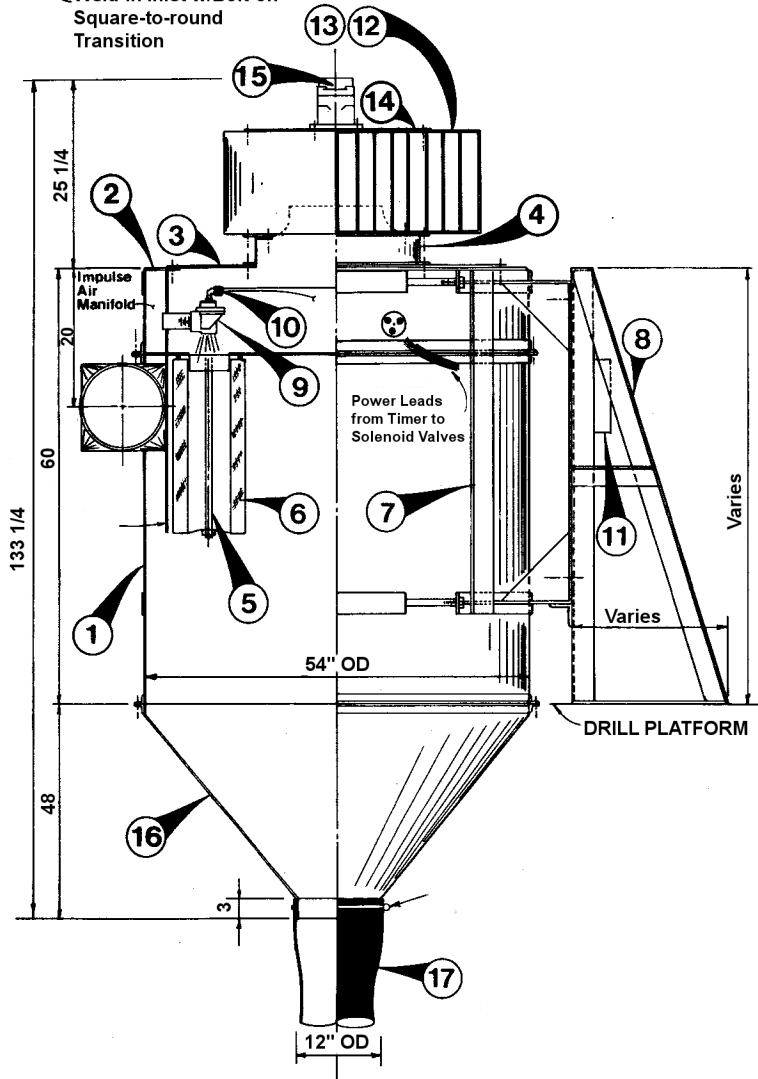


SIZE 7SB *Filter/Clone* DUST COLLECTOR (HYDRAULIC MOTOR DRIVE)

NOTE: Top Plate, Blower and Motor not shown this view



Weld-in Inlet w/Bolt-on Square-to-round Transition

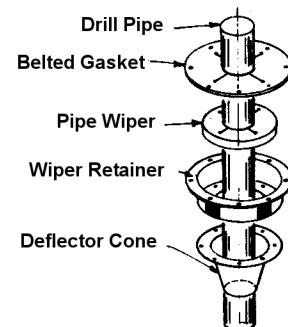


PARTS LIST

Item	Part No.	Qty	Description
1	FC70001L	1	Lower Housing
2	FC70001U	1	Upper Housing
3	FC70001T	1	Housing Top Plate
4	BL365300	1	Blower Mount
5	FC300020	9	Element Retention
6	FC301001	9	Filter Element
7	FC701010	1	Mounting Saddle
8	Call for P/N	1	Mounting Frame
9	FC201002	9	Impulse Valve
10	FC401002	1	DC Solenoid Valve
11	DET09000	1	DC Electric Timer
12	BL365100	1	Blower Housing
13	BL365200	1	Blower Wheel
14	BL365110	1	Blower Top Plate
15	FC501005	1	Hydraulic Motor
16	FC700120	1	Dropout Cone
17	BL121601	1	Dropout Hose

1. Dust Box Assembly. CUSTOM DESIGNS AVAILABLE TO FIT SPECIFIC DRILLS. INCLUDES HYDRAULIC CYLINDER ASSEMBLIES FOR ADJUSTING DUST BOX HEIGHT, VARIETY OF CURTAIN MATERIALS, AND MULTIPLE SEAL AROUND DRILL PIPE (see dwg below).

2. Suction Hose. HEAVY-DUTY ABRASION RESISTANT RUBBER POLYMER, 12" ID AVAILABLE IN 12.5 FT AND 25 FT LENGTHS.



MULTIPLE SEAL